

# Can't Stop

(Lead)

Red Hot Chili Peppers

1 = 89

4/4

INTRO

2

3 = 88

4 = 89

5 = 90

6 = 89

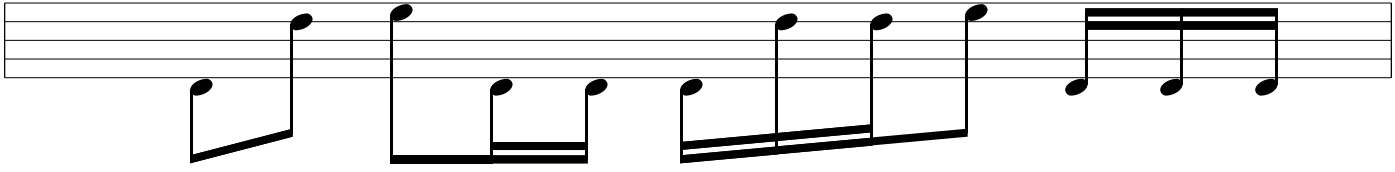
7 8

9

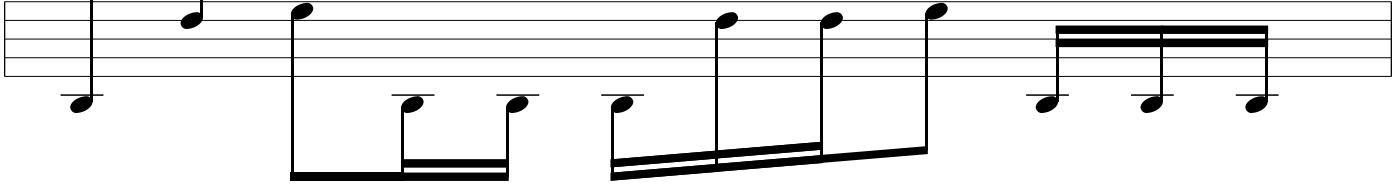
10

$\text{♩} = 91$

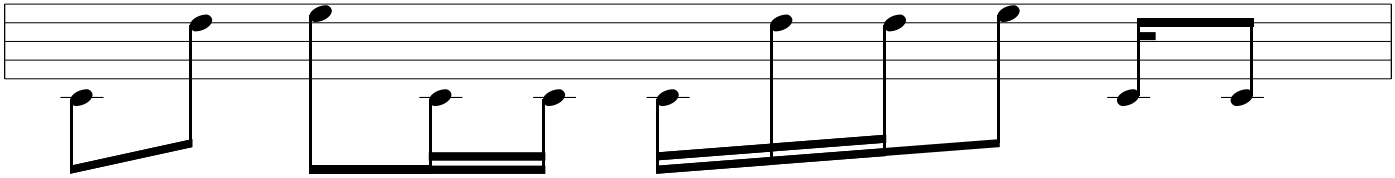
11



12

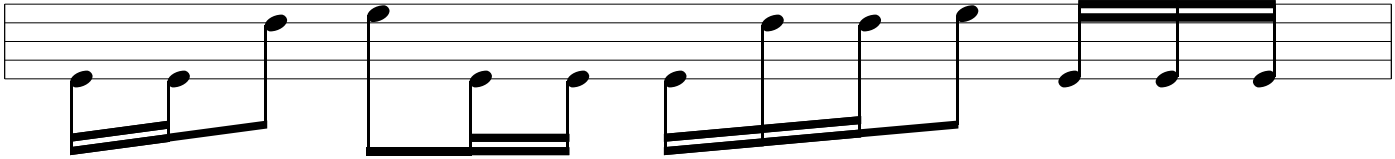


13

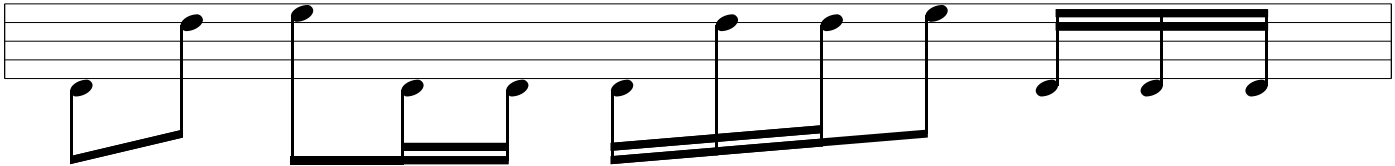


VERSE

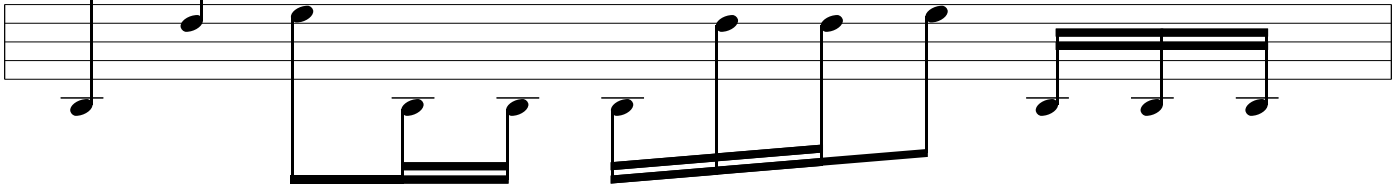
14



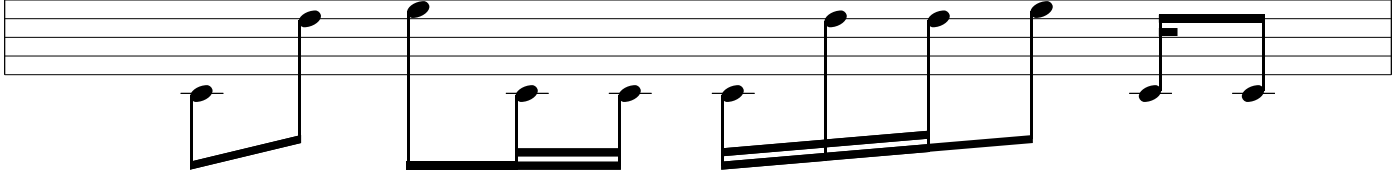
15



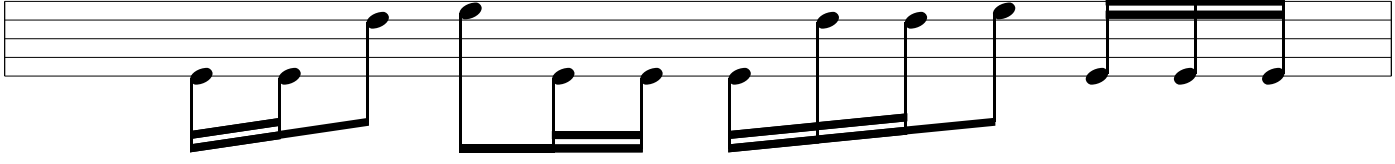
16



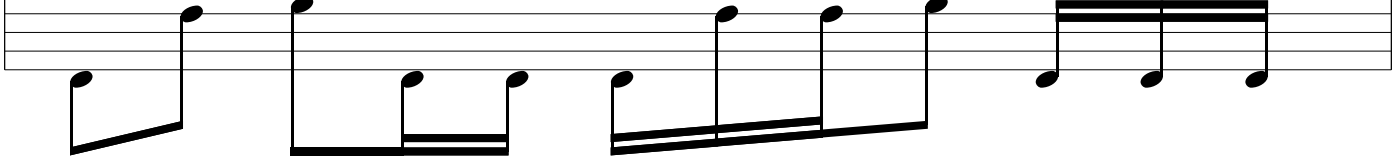
17 ♩ = 93



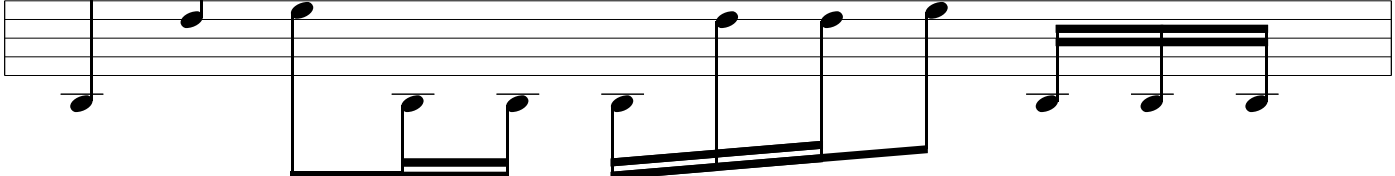
18 ♩ = 91



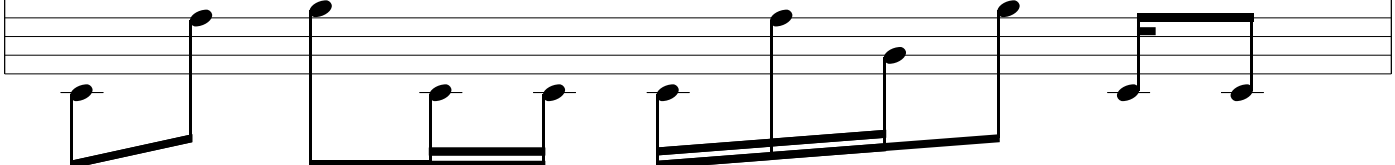
19



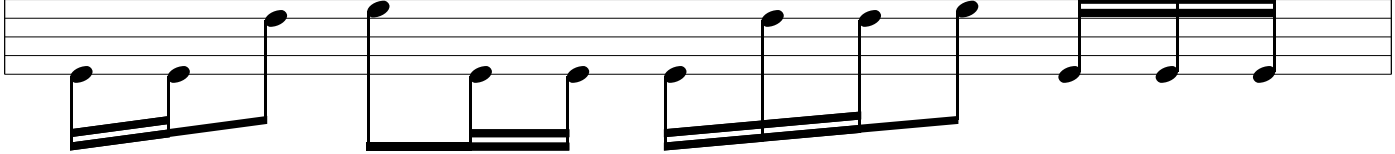
20



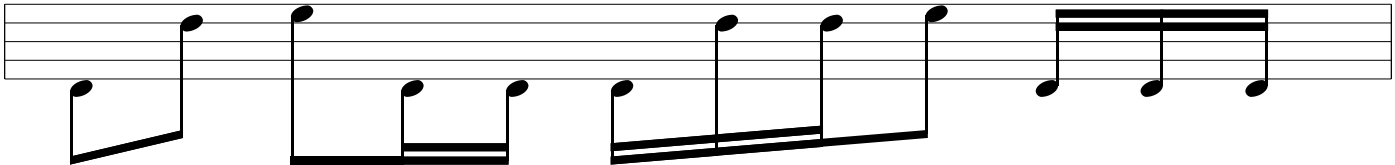
21



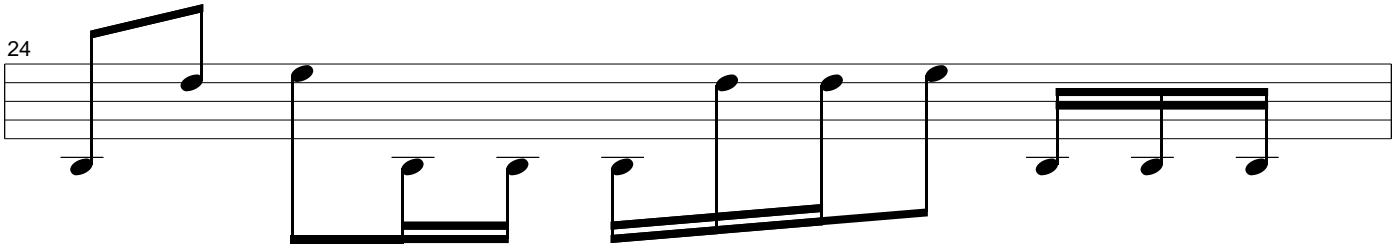
22



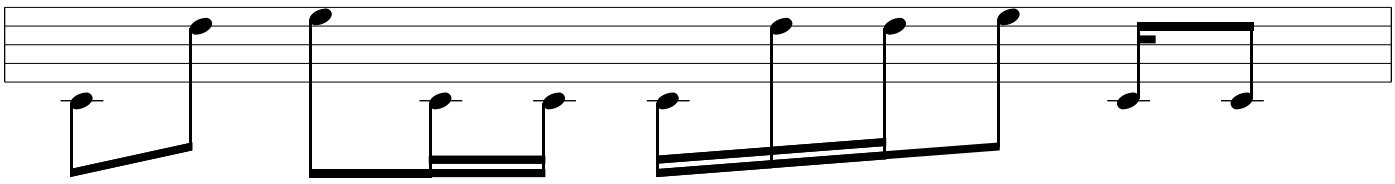
23



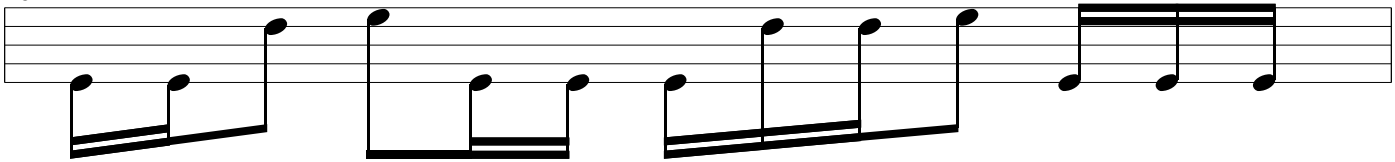
24



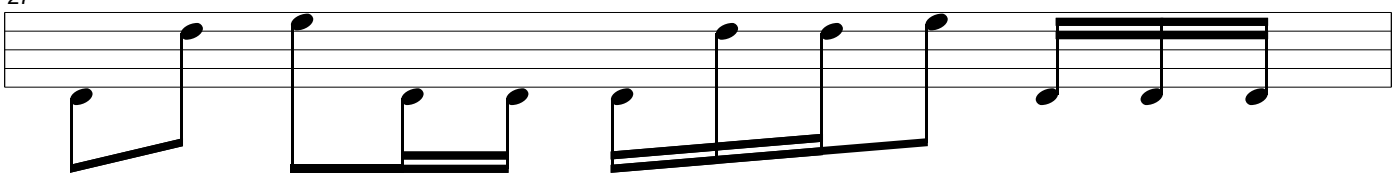
25



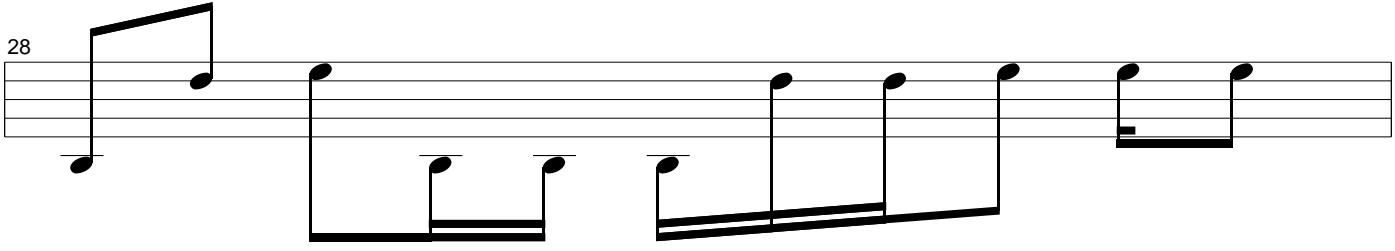
26



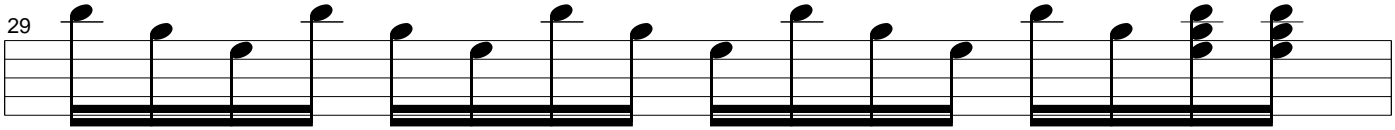
27



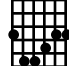
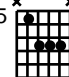

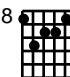
28

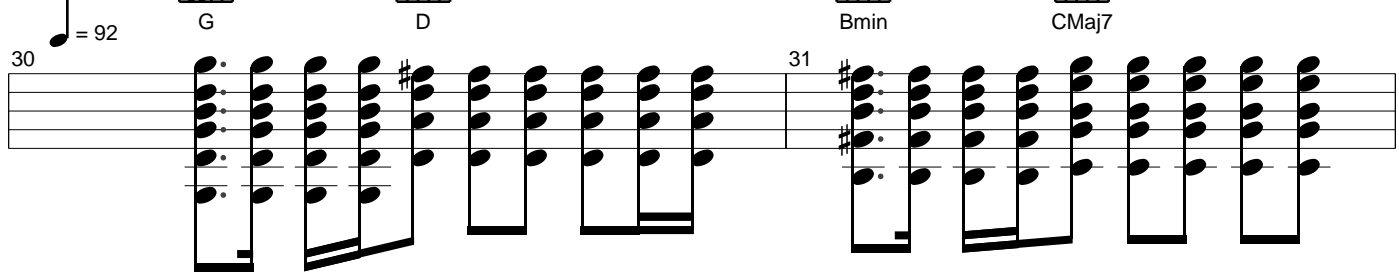



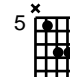
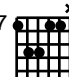
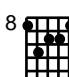
29

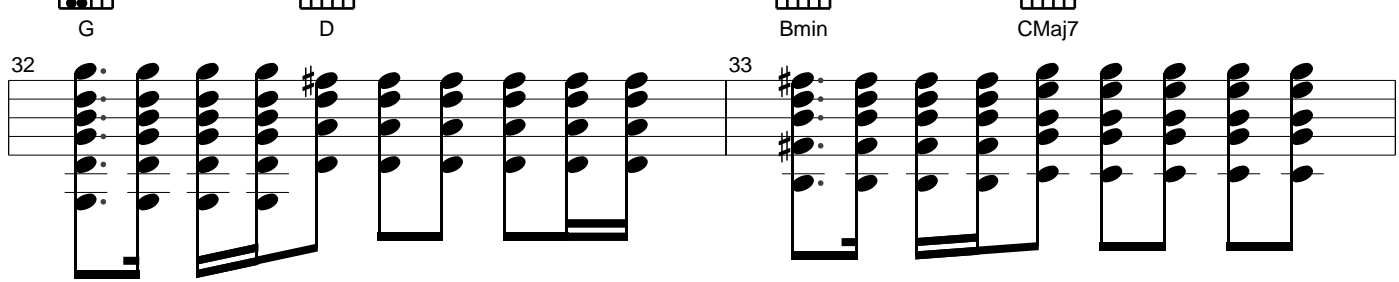


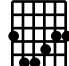
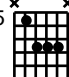
CHORUS

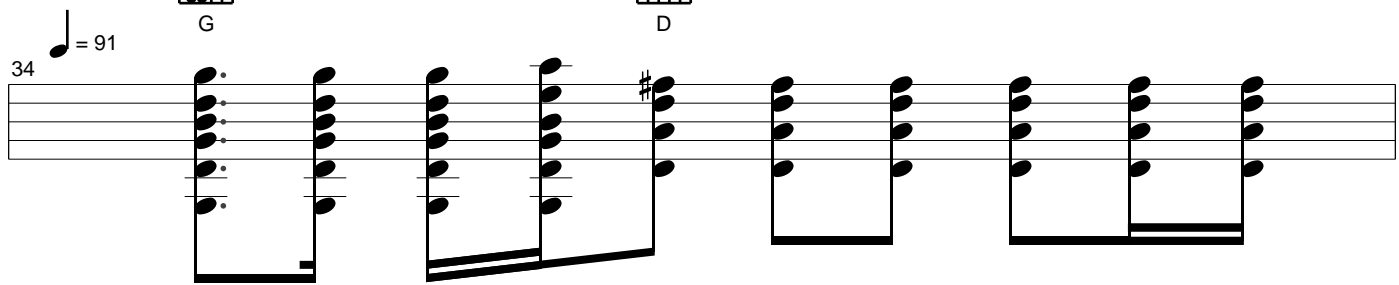
1  G      5  D      7  Bmin      8  CMaj7


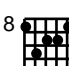
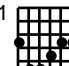
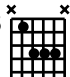
30 

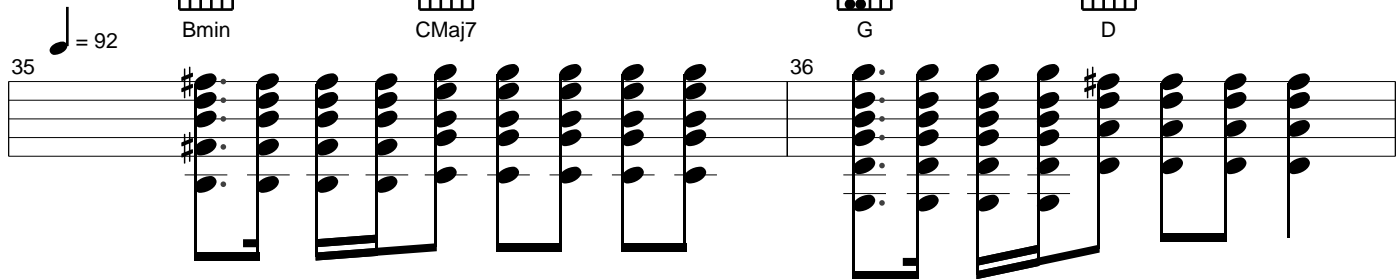
1  G      5  D      7  Bmin      8  CMaj7

32 

1  G      5  D

34 

7  Bmin      8  CMaj7      1  G      5  D

35 

VERSE



Bmin



Emin

37  $\text{♩} = 89$   $\text{♩} = 91$  38

39

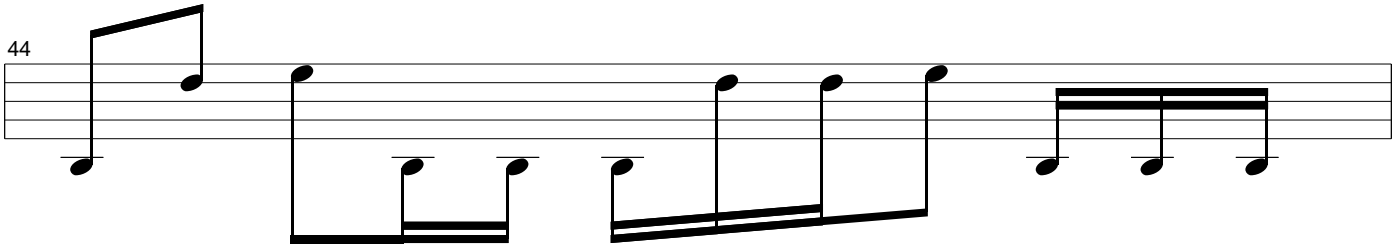
40

41  $\text{♩} = 92$

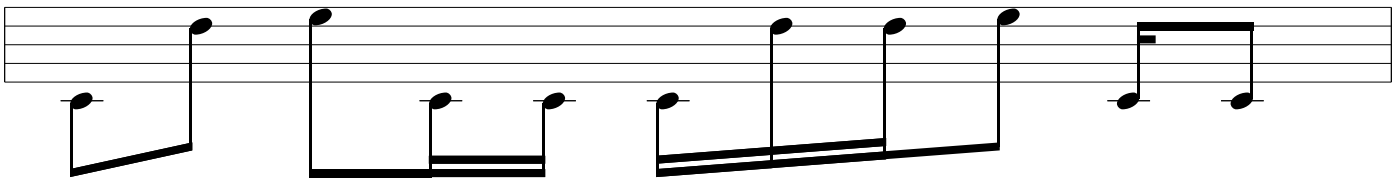
42

43

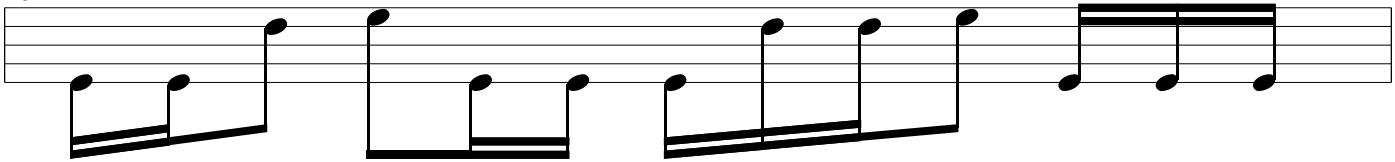
44



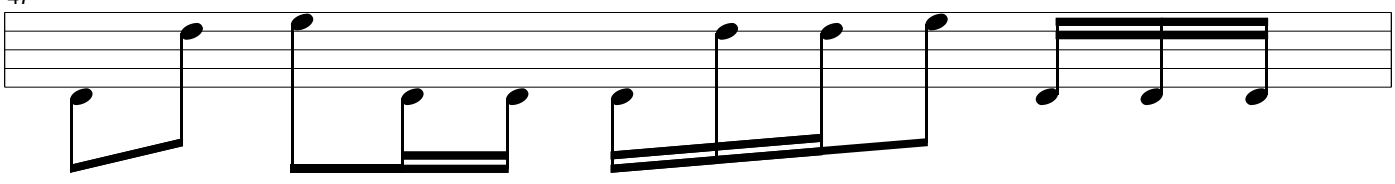
45



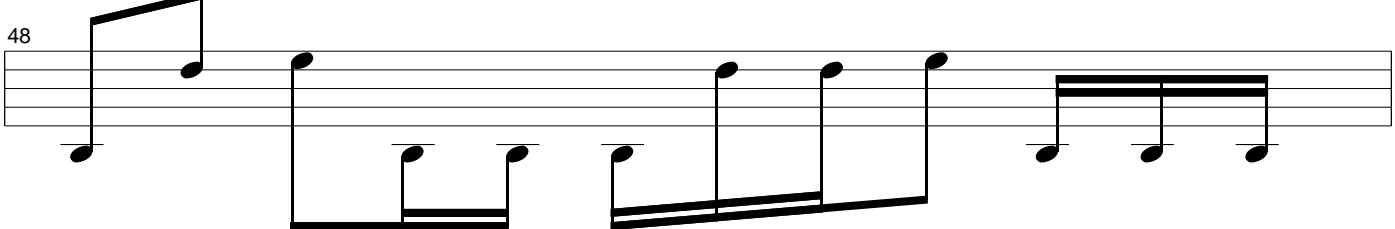
46



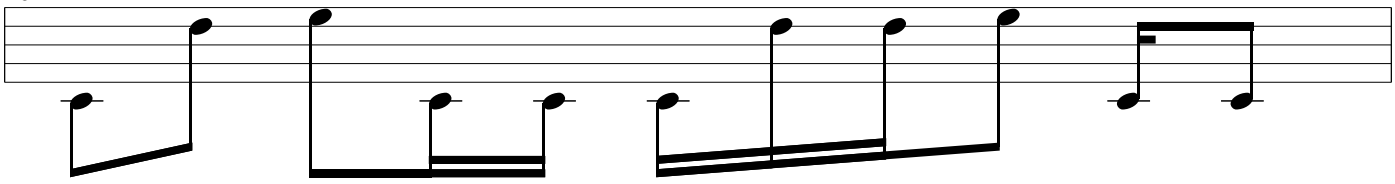
47



48



49



50

51

52

53  $\text{♩} = 93$

CHORUS



G



D



Bmin



CMaj7

54  $\text{♩} = 92$



G



D



Bmin



CMaj7

56





1 G



5 D



7 Bmin



8 CMaj7

♩ = 91

58

59

INTERLUDE



1 G



5 D



7 Bmin



7 Emin



12 Emin

60

61

62



10 D



11 D6



7 Bmin



7 Bmin7



7 Emin



8 C



10 D

63

64

65



12 Emin



12 C



10 D



11 D6



7 Bmin

66

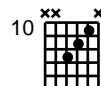
67

68

INTERLUDE



8 C

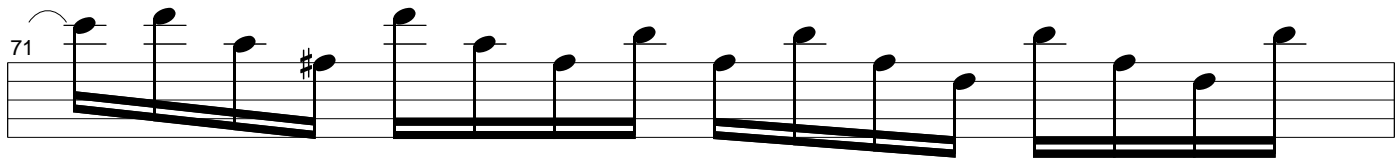


10 D

69

70

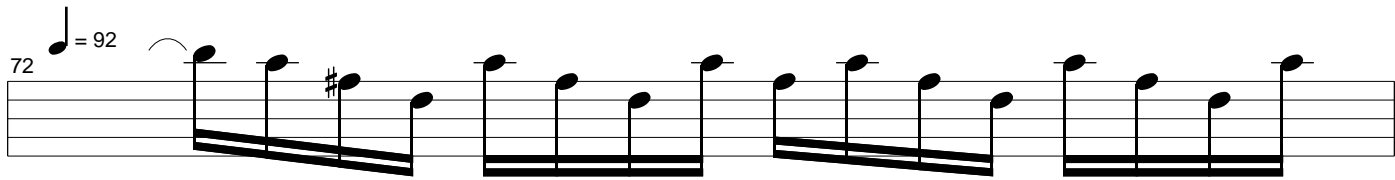
71



Musical notation for measure 71, featuring a sequence of eighth notes on a single staff. The notes are G4, A4, B4, C#5, G4, A4, B4, C5, G4, A4, B4, C5, G4, A4, B4, C5. A slur covers the first four notes, and another slur covers the last four notes.

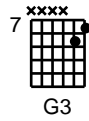
72

$\text{♩} = 92$



Musical notation for measure 72, featuring a sequence of eighth notes on a single staff. The notes are G4, A4, B4, C#5, G4, A4, B4, C5, G4, A4, B4, C5, G4, A4, B4, C5. A slur covers the first four notes, and another slur covers the last four notes.

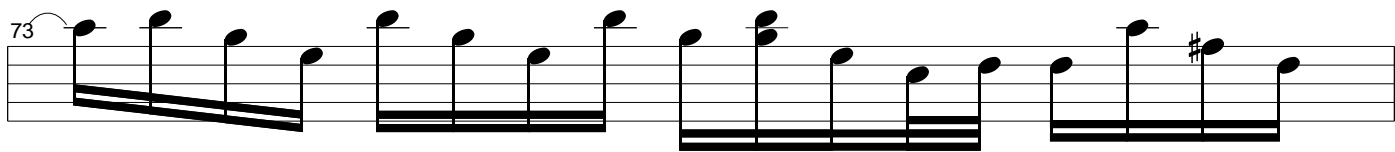
7



Guitar chord diagram for G3, showing a 7th fret barre with the 5th string open and the 6th string on the 7th fret.

G3

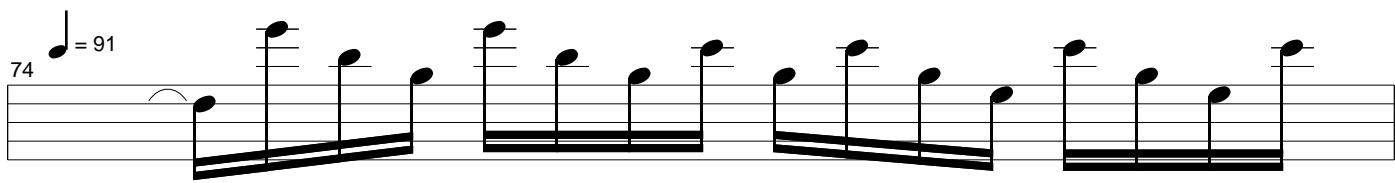
73



Musical notation for measure 73, featuring a sequence of eighth notes on a single staff. The notes are G4, A4, B4, C5, G4, A4, B4, C#5, G4, A4, B4, C5, G4, A4, B4, C#5. A slur covers the first four notes, and another slur covers the last four notes.

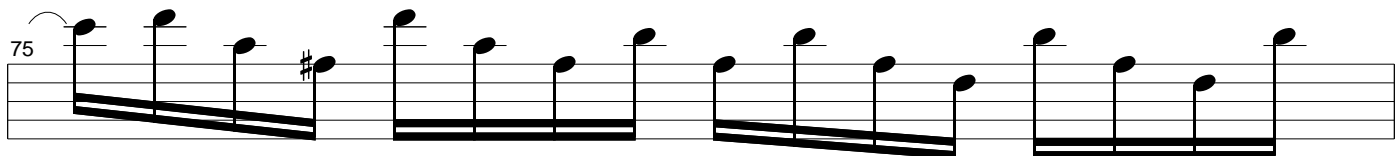
74

$\text{♩} = 91$



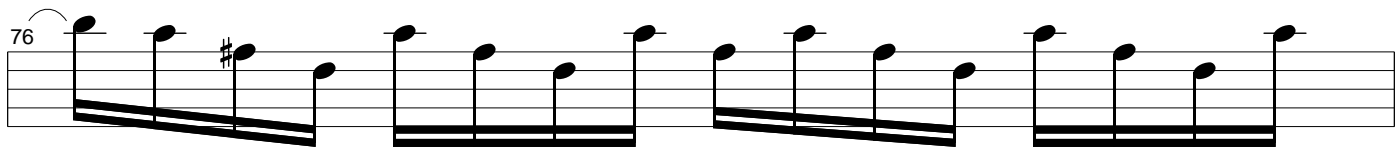
Musical notation for measure 74, featuring a sequence of eighth notes on a single staff. The notes are G4, A4, B4, C5, G4, A4, B4, C5, G4, A4, B4, C5, G4, A4, B4, C5. A slur covers the first four notes, and another slur covers the last four notes.

75



Musical notation for measure 75, featuring a sequence of eighth notes on a single staff. The notes are G4, A4, B4, C#5, G4, A4, B4, C5, G4, A4, B4, C5, G4, A4, B4, C5. A slur covers the first four notes, and another slur covers the last four notes.

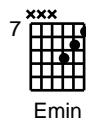
76



Musical notation for measure 76, featuring a sequence of eighth notes on a single staff. The notes are G4, A4, B4, C#5, G4, A4, B4, C5, G4, A4, B4, C5, G4, A4, B4, C5. A slur covers the first four notes, and another slur covers the last four notes.

SOLO

7

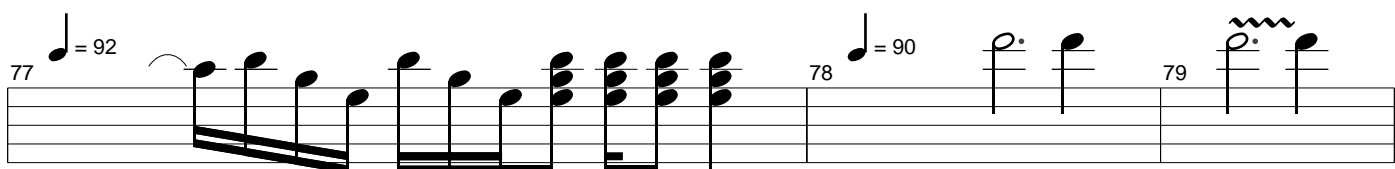


Guitar chord diagram for Emin, showing a 7th fret barre with the 5th string open and the 6th string on the 7th fret.

Emin

77

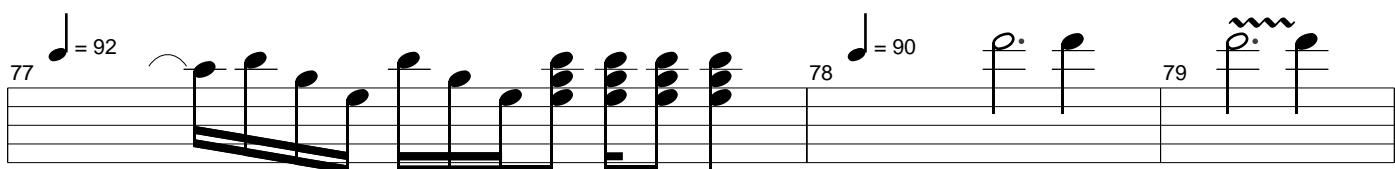
$\text{♩} = 92$



Musical notation for measure 77, featuring a sequence of eighth notes on a single staff. The notes are G4, A4, B4, C#5, G4, A4, B4, C5, G4, A4, B4, C5, G4, A4, B4, C5. A slur covers the first four notes, and another slur covers the last four notes.

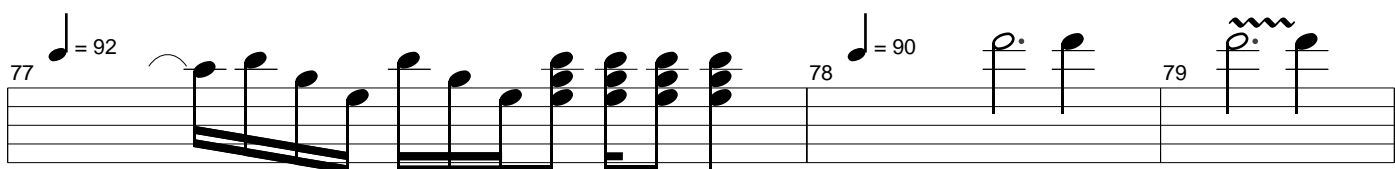
78

$\text{♩} = 90$



Musical notation for measure 78, featuring a sequence of eighth notes on a single staff. The notes are G4, A4, B4, C5, G4, A4, B4, C5. A slur covers the first four notes, and another slur covers the last four notes.

79



Musical notation for measure 79, featuring a sequence of eighth notes on a single staff. The notes are G4, A4, B4, C5, G4, A4, B4, C5. A slur covers the first four notes, and another slur covers the last four notes.

80  $\text{♩} = 93$   $\text{p}^\circ$   $\text{p}^\circ$  81  $\text{♩} = 94$   $\text{p}^\circ$   $\text{p}^\circ$   $\text{p}^\circ$   $\text{p}^\circ$  82  $\text{♩} = 93$   $\text{p}^\circ$   $\text{p}^\circ$

83  $\text{p}^\circ$   $\text{p}^\circ$  84  $\text{p}^\circ$   $\text{p}^\circ$  85  $\text{p}^\circ$   $\text{p}^\circ$   $\text{p}^\circ$   $\text{p}^\circ$

VERSE

86

87

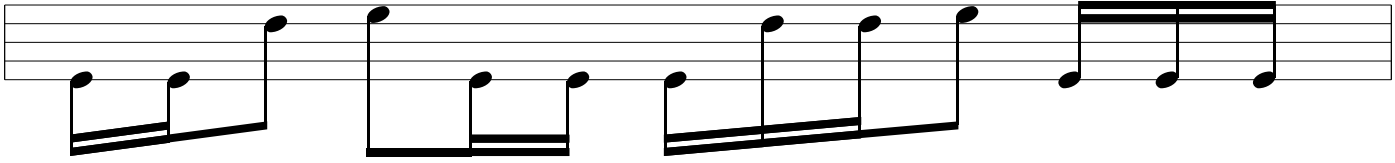
88

89

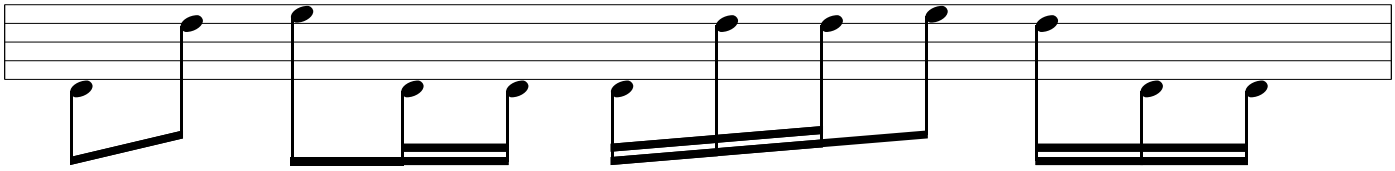
90



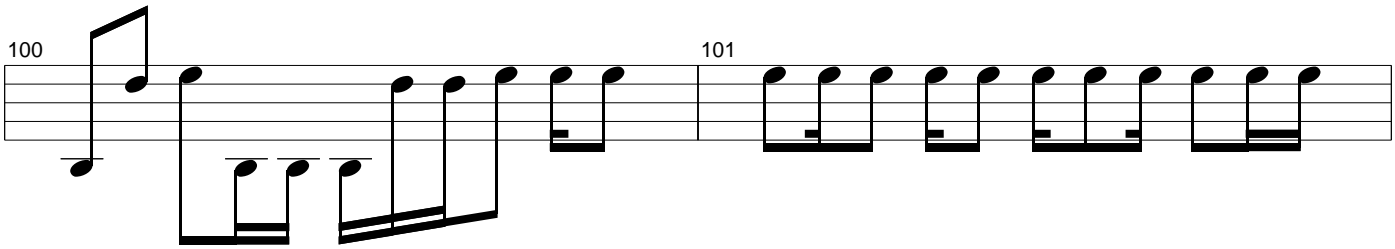
98



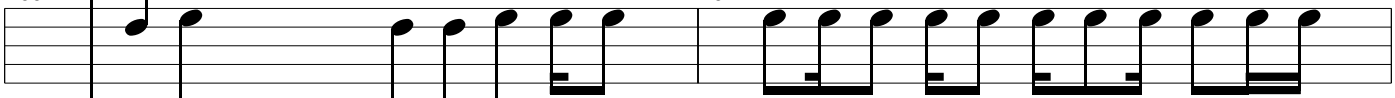
99



100



101



NOGUITAR

102

103

104

